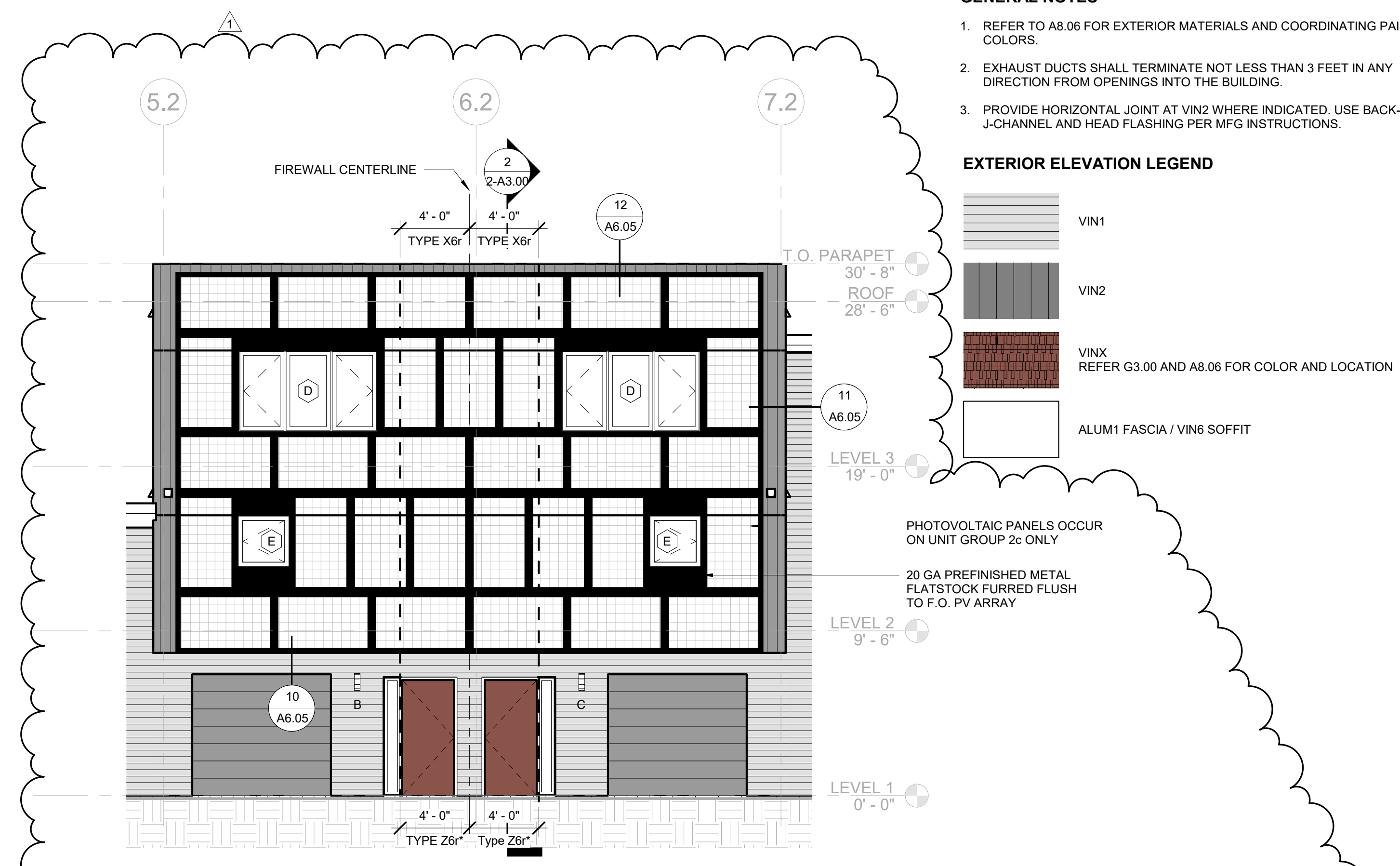
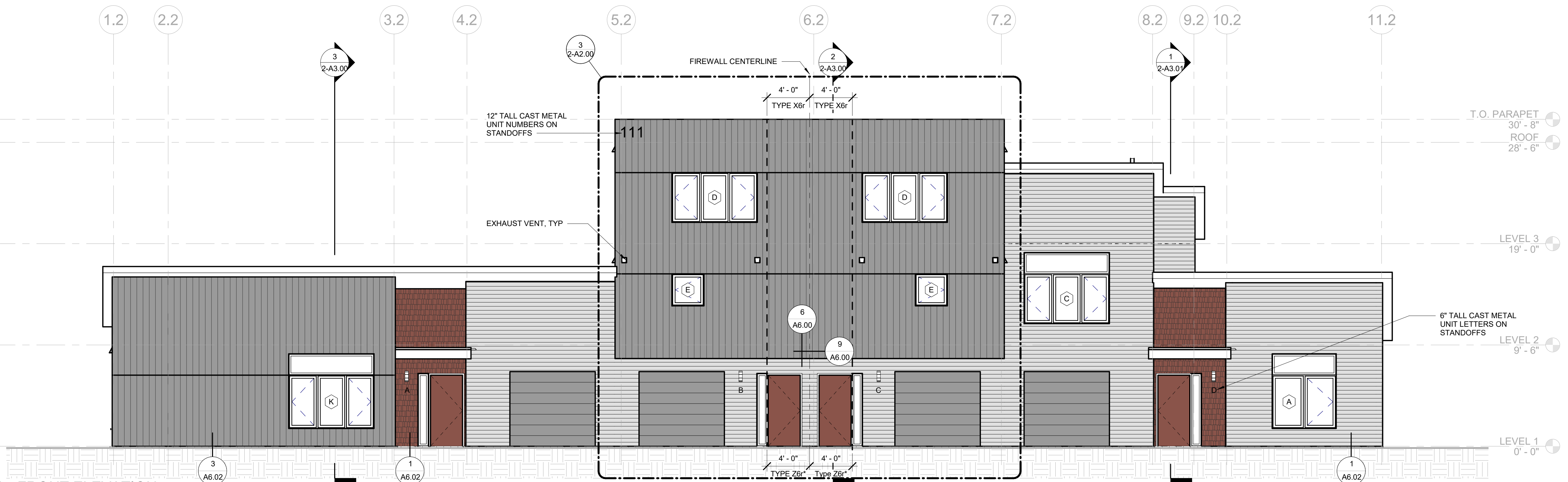
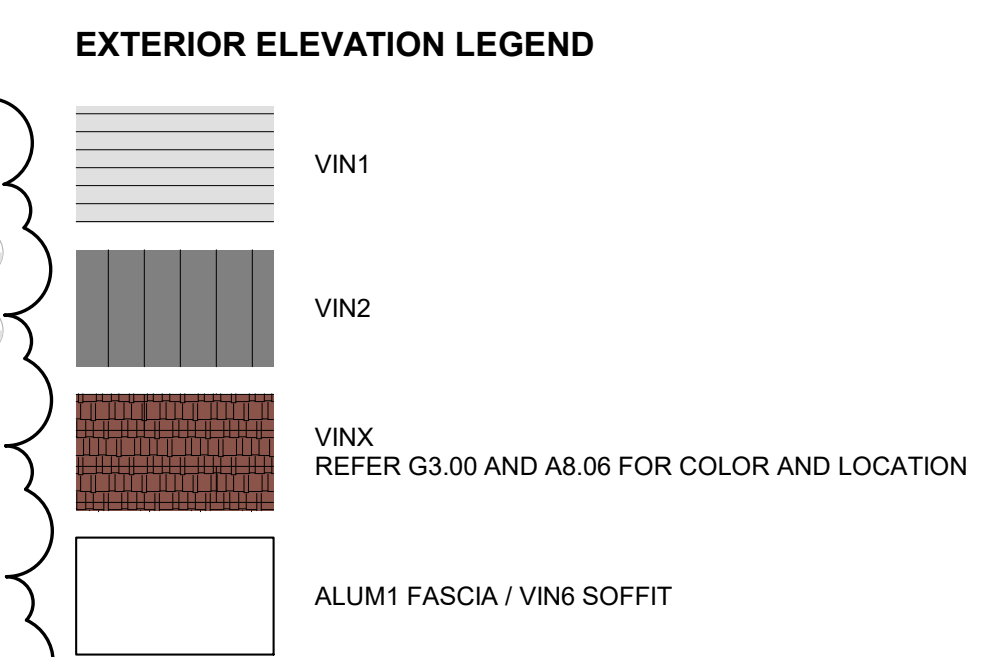


2 - LEFT ELEVATION  
3/16" = 1'-0"

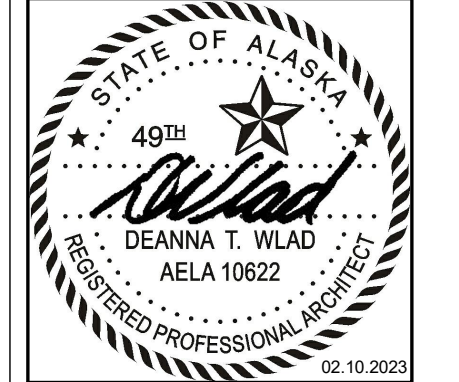


3 - 2 - FRONT ELEVATION (UG2c)  
3/16" = 1'-0"

- GENERAL NOTES**
- REFER TO A8.06 FOR EXTERIOR MATERIALS AND COORDINATING PAINT TRIM COLORS.
  - EXHAUST DUCTS SHALL TERMINATE NOT LESS THAN 3 FEET IN ANY DIRECTION FROM OPENINGS INTO THE BUILDING.
  - PROVIDE HORIZONTAL JOINT AT VIN2 WHERE INDICATED. USE BACK-TO-BACK J-CHANNEL AND HEAD FLASHING PER MFG INSTRUCTIONS.



1 - 2 - FRONT ELEVATION  
3/16" = 1'-0"



CERTIFICATE OF AUTHORIZATION NO:  
SPARK DESIGN, LLC #AEC1394

**spark design, llc**  
 architecture • interiors • design-build  
 5401 cordova street, suite 301  
 anchorage, alaska 99518  
 p. 907.344.3424 f. 907.771.9776

VRS  
 OLD MATANUSKA TOWNHOUSE DEVELOPMENT  
 PHASE 2  
 UNIT GROUP 2A / 2B / 2C / 2D

#	DESCRIPTION	DATE
1	ADDENDUM #2	03.09.2023

JOB NO.	19-057
DATE	02.10.2023
DRAWN	RPM
REVIEWED	DTW

SHEET NAME  
EXTERIOR ELEVATIONS

SHEET NO.  
**2-A2.00**