

WINDOW BASIS OF DESIGN

BASIS OF DESIGN: MANUFACTURER: CAPITAL GLASS OR EQUAL
 STYLE: NORTHERN WINDOWS OR EQUAL
 FRAME COLOR: WHITE
 HOUSING COLOR: WHITE
 GLASS: INSUL-THERM DOUBLE PANE INSULATED GLASS (U-VALUE 0.26 MIN)
 ARGON FILLED
 LOW-E COATING ON SURFACE 2
 INT. ACCESSORIES: 5/8" RETURN
 HANDLE: ADA-COMPLIANT HANDLES IN TYPE C UNIT (UFAS)
 NESTING HANDLES IN ALL OTHER UNITS
 SCREEN: FIBERGLASS MESH, WHITE TRIM

WINDOW NOTES

- BEDROOM WINDOWS: EMERGENCY ESCAPE AND RESCUE WINDOWS SHALL HAVE THE FOLLOWING:
 OPENING SHALL NOT BE GREATER THAN 44 INCHES MEASURED FROM THE FLOOR PER R310.1.
 MINIMUM NET CLEAR AREA OF 5.7 SQUARE FEET PER R310.1.1.
 MINIMUM NET CLEAR OPENING HEIGHT OF 24 INCHES PER IRC SECTION R310.1.2.
 MINIMUM NET CLEAR OPENING WIDTH OF 20 INCHES PER IRC SECTION R310.1.3.
- ALL GLAZING SHALL BE IG1, UNO.

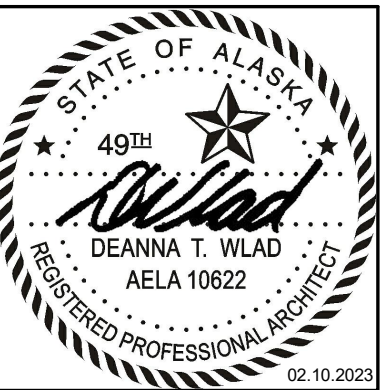
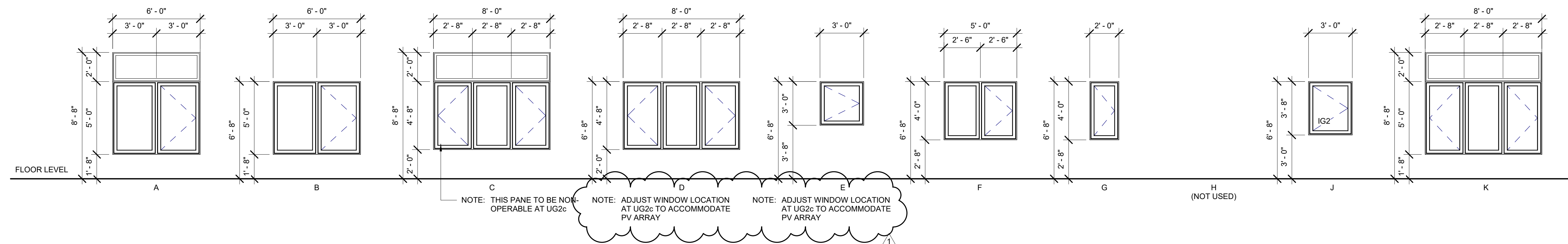
VINYL WINDOW DETAILS

3/A6.04: TYPICAL VINYL WINDOW AT VIN1 HEAD
 2/A6.04: TYPICAL VINYL WINDOW AT VIN1 JAMB
 1/A6.04: TYPICAL VINYL WINDOW AT VIN1 SILL

 6/A6.04: TYPICAL VINYL WINDOW AT VIN2 HEAD
 5/A6.04: TYPICAL VINYL WINDOW AT VIN2 JAMB
 4/A6.04: TYPICAL VINYL WINDOW AT VIN2 SILL

GLAZING TYPES:

IG1 INSULATED GLAZING
 IG2 INSULATED SAFETY GLAZING



CERTIFICATE OF AUTHORIZATION NO:
 SPARK DESIGN, LLC #AEL1394

spark design, llc
 architecture • interiors • design-build
 5401 cordova street, suite 301
 anchorage, alaska 99518
 p. 907.344.3424 f. 907.771.9776

VRS
 OLD MATANUSKA TOWNHOUSE DEVELOPMENT
 PHASE 2
 UNIT GROUP 2A / 2B / 2C / 2D

| REVISION SCHEDULE | | |
|-------------------|-------------|------------|
| # | DESCRIPTION | DATE |
| 1 | ADDENDUM #2 | 03.09.2023 |

| | |
|----------|------------|
| JOB NO. | 19-057 |
| DATE | 02.10.2023 |
| DRAWN | RPM |
| REVIEWED | DTW |

SHEET NAME
 WINDOW TYPES

SHEET NO.
2-A5.01