

Door Schedule													
Mark	Room		Operation / Type	Size		Material		Glazing	Fire Rating	Sill Height	Comments		Mark
	From	To		Width	Height	Door	Frame						
Basement													
B01		B-01	SH	4' - 0"	6' - 8"	HC-WD	MTL	-	-	0"			B01
B02	B-01	B-02	SH	3' - 0"	6' - 8"	SC-WD	WD	-	-	0"			B02
B03		B-03	SH	3' - 0"	6' - 8"	SC-WD	WD	-	-	0"			B03
B04	B-01	B-04	SH	4' - 0"	6' - 8"	HC-WD	MTL	-	-	0"			B04
B05	B-01	B-05	SH	3' - 0"	6' - 8"	SC-WD	WD	-	-	0"			B05
B06	B-04	B-06	SH	3' - 0"	6' - 8"	SC-WD	WD	-	-	0"			B06
B07	B-08	B-07	OP	3' - 0"	6' - 8"	-	WD	-	-	0"			B07
B08	B-08	B-04	SH	3' - 0"	6' - 8"	SC-WD	WD	-	-	0"			B08
1st Floor													
10A		C10-01	SH	3' - 0"	6' - 8"	SC-WD	WD	-	20 Minute	0"			10A
101A		C101-07	SH	3' - 0"	6' - 8"	SC-WD	WD	-	20 Minute	0"			101A
101B	C101-01	C101-07	SH	3' - 0"	6' - 8"	SC-WD	WD	-	-	0"			101B
101C		C101-07	SH	2' - 6"	6' - 8"	HC-WD	WD	-		0"			101C
101D		C101-02	SH	2' - 6"	6' - 8"	HC-WD	WD	-		0"			101D
101E	C101-07	C101-02	SH	3' - 0"	6' - 8"	SC-WD	WD	-	-	0"			101E
101F		C101-07	SH	2' - 0"	6' - 8"	HC-WD	WD	-		0"			101F
101G		C101-04	P	6' - 0"	6' - 8"	ALUM	ALUM	Full	-	0"			101G
101H	C101-05		DS	4' - 0"	6' - 8"	SC-WD	WD	-	-	0"			101H
101J	C101-07	C101-05	SH	3' - 0"	6' - 8"	SC-WD	WD	-	-	0"			101J
101K	C101-07	C101-06	SH	3' - 0"	6' - 8"	SC-WD	WD	-	-	0"			101K
101L		C101-06	DS	4' - 0"	6' - 8"	SC-WD	WD	-	-	0"			101L
102A		C102-08	SH	3' - 0"	6' - 8"	SC-WD	WD	-	20 Minute	0"			102A
102B	C102-01	C102-08	SH	2' - 6"	6' - 8"	HC-WD	WD	-	-	0"			102B
102C		C102-02	DS	5' - 0"	6' - 8"	SC-WD	WD	-	-	0"			102C
102D	C102-08	C102-02	SH	3' - 0"	6' - 8"	SC-WD	WD	-	-	0"			102D
102E		C102-03	SH	2' - 4"	6' - 8"	HC-WD	WD	-		0"			102E
102F	C102-08	C102-03	SH	3' - 0"	6' - 8"	SC-WD	WD	-	-	0"			102F
102G	C102-06	C102-04	SH	3' - 0"	6' - 8"	SC-WD	WD	-	-	0"			102G
102H		C102-04	DS	5' - 0"	6' - 8"	SC-WD	WD	-	-	0"			102H
102J		C102-05	DS	5' - 0"	6' - 8"	SC-WD	WD	-	-	0"			102J
102K	C102-06	C102-05	SH	3' - 0"	6' - 8"	SC-WD	WD	-	-	0"			102K
102L		C102-06	P	6' - 0"	6' - 8"	ALUM	ALUM	Full	-	0"			102L
102M		C102-08	SH	2' - 0"	6' - 8"	HC-WD	WD	-		0"			102M
102N		C102-08	OP	5' - 0"	6' - 8"	-	WD	-	-	0"			102N
102P		C102-08	DS	4' - 0"	6' - 8"	SC-WD	WD	-	-	0"			102P
103A		C103-07	SH	3' - 0"	6' - 8"	SC-WD	WD	-	20 Minute	0"			103A
103B		C103-01	DS	5' - 0"	6' - 8"	SC-WD	WD	-	-	0"			103B
103C	C103-07	C103-01	SH	3' - 0"	6' - 8"	SC-WD	WD	-	-	0"			103C
103D	C103-07	C103-02	SH	3' - 0"	6' - 8"	SC-WD	WD	-	-	0"			103D
103E		C103-02	DS	5' - 0"	6' - 8"	SC-WD	WD	-	-	0"			103E
103F		C103-03	P	6' - 0"	6' - 8"	ALUM	ALUM	Full	-	0"			103F
103G		C103-04	SH	2' - 0"	6' - 8"	HC-WD	WD	-		0"			103G
103H	C103-07	C103-05	SH	3' - 0"	6' - 8"	SC-WD	WD	-	-	0"			103H
103J	C103-05	C103-05	SH	2' - 6"	6' - 8"	HC-WD	WD	-		0"			103J
103K	C103-06	C103-07	SH	3' - 0"	6' - 8"	SC-WD	WD	-	-	0"			103K
103L		C103-07	SH	2' - 6"	6' - 8"	HC-WD	WD	-		0"			103L
303M	C102-08	C102-09	SH	3' - 0"	6' - 8"	SC-WD	WD	-	20 Minute	0"			303M
2nd Floor													
20A		C20-01	SH	3' - 0"	6' - 8"	SC-WD	WD	-	20 Minute	0"			20A
201A		C201-07	SH	3' - 0"	6' - 8"	SC-WD	WD	-	20 Minute	0"			201A
201B	C201-01	C201-07	SH	3' - 0"	6' - 8"	SC-WD	WD	-	-	0"			201B

Door Schedule													
Mark	Room		Operation / Type	Size		Material		Glazing	Fire Rating	Sill Height	Comments	Mark	
	From	To		Width	Height	Door	Frame						
201C		C201-07	SH	2' - 6"	6' - 8"	HC-WD	WD	-		0"		201C	
201D		C201-02	SH	2' - 6"	6' - 8"	HC-WD	WD	-		0"		201D	
201E	C201-07	C201-02	SH	3' - 0"	6' - 8"	SC-WD	WD	-	-	0"		201E	
201F		C201-07	SH	2' - 0"	6' - 8"	HC-WD	WD	-		0"		201F	
201G		C201-04	P	6' - 0"	6' - 8"	ALUM	ALUM	Full	-	0"		201G	
201H	C201-05		DS	4' - 0"	6' - 8"	SC-WD	WD	-	-	0"		201H	
201J	C201-07	C201-05	SH	3' - 0"	6' - 8"	SC-WD	WD	-	-	0"		201J	
201K	C201-07	C201-06	SH	3' - 0"	6' - 8"	SC-WD	WD	-	-	0"		201K	
201L		C201-06	DS	4' - 0"	6' - 8"	SC-WD	WD	-	-	0"		201L	
202A		C202-08	SH	3' - 0"	6' - 8"	SC-WD	WD	-	20 Minute	0"		202A	
202B	C202-01	C202-08	SH	2' - 6"	6' - 8"	HC-WD	WD	-	-	0"		202B	
202C		C202-02	DS	5' - 0"	6' - 8"	SC-WD	WD	-	-	0"		202C	
202D	C202-08	C202-02	SH	3' - 0"	6' - 8"	SC-WD	WD	-	-	0"		202D	
202E		C202-03	SH	2' - 4"	6' - 8"	HC-WD	WD	-		0"		202E	
202F	C202-08	C202-03	SH	3' - 0"	6' - 8"	SC-WD	WD	-	-	0"		202F	
202G	C202-06	C202-04	SH	3' - 0"	6' - 8"	SC-WD	WD	-	-	0"		202G	
202H		C202-04	DS	5' - 0"	6' - 8"	SC-WD	WD	-	-	0"		202H	
202J		C202-05	DS	5' - 0"	6' - 8"	SC-WD	WD	-	-	0"		202J	
202K	C202-06	C202-05	SH	3' - 0"	6' - 8"	SC-WD	WD	-	-	0"		202K	
202L		C202-06	P	6' - 0"	6' - 8"	ALUM	ALUM	Full	-	0"		202L	
202M		C202-08	SH	2' - 0"	6' - 8"	HC-WD	WD	-		0"		202M	
202N		C202-08	OP	5' - 0"	6' - 8"	-	WD	-	-	0"		202N	
202P		C202-08	DS	4' - 0"	6' - 8"	SC-WD	WD	-	-	0"		202P	
203A		C203-07	SH	3' - 0"	6' - 8"	SC-WD	WD	-	20 Minute	0"		203A	
203B		C203-01	DS	5' - 0"	6' - 8"	SC-WD	WD	-	-	0"		203B	
203C	C203-07	C203-01	SH	3' - 0"	6' - 8"	SC-WD	WD	-	-	0"		203C	
203D	C203-07	C203-02	SH	3' - 0"	6' - 8"	SC-WD	WD	-	-	0"		203D	
203E		C203-02	DS	5' - 0"	6' - 8"	SC-WD	WD	-	-	0"		203E	
203F		C203-03	P	6' - 0"	6' - 8"	ALUM	ALUM	Full	-	0"		203F	
203G		C203-04	SH	2' - 0"	6' - 8"	HC-WD	WD	-		0"		203G	
203H	C203-07	C203-05	SH	3' - 0"	6' - 8"	SC-WD	WD	-	-	0"		203H	
203J	C203-05		SH	2' - 6"	6' - 8"	HC-WD	WD	-		0"		203J	
203K	C203-06	C203-07	SH	3' - 0"	6' - 8"	SC-WD	WD	-	-	0"		203K	
203L		C203-07	SH	2' - 6"	6' - 8"	HC-WD	WD	-		0"		203L	
3rd Floor													
30A		C30-01	SH	3' - 0"	6' - 8"	SC-WD	WD	-	20 Minute	0"		30A	
301A		C301-07	SH	3' - 0"	6' - 8"	SC-WD	WD	-	20 Minute	0"		301A	
301B	C301-01	C301-07	SH	3' - 0"	6' - 8"	SC-WD	WD	-	-	0"		301B	
301C		C301-07	SH	2' - 6"	6' - 8"	HC-WD	WD	-		0"		301C	
301D		C301-02	SH	2' - 6"	6' - 8"	HC-WD	WD	-		0"		301D	
301E	C301-07	C301-02	SH	3' - 0"	6' - 8"	SC-WD	WD	-	-	0"		301E	
301F		C301-07	SH	2' - 0"	6' - 8"	HC-WD	WD	-		0"		301F	
301G		C301-04	P	6' - 0"	6' - 8"	ALUM	ALUM	Full	-	0"		301G	
301H	C301-05		DS	4' - 0"	6' - 8"	SC-WD	WD	-	-	0"		301H	
301J	C301-07	C301-05	SH	3' - 0"	6' - 8"	SC-WD	WD	-	-	0"		301J	
301K	C301-07	C301-06	SH	3' - 0"	6' - 8"	SC-WD	WD	-	-	0"		301K	
301L		C301-06	DS	4' - 0"	6' - 8"	SC-WD	WD	-	-	0"		301L	
302A		C302-08	SH	3' - 0"	6' - 8"	SC-WD	WD	-	20 Minute	0"		302A	
302B	C302-01	C302-08	SH	2' - 6"	6' - 8"	HC-WD	WD	-	-	0"		302B	
302C		C302-02	DS	5' - 0"	6' - 8"	SC-WD	WD	-	-	0"		302C	
302D	C302-08	C302-02	SH	3' - 0"	6' - 8"	SC-WD	WD	-	-	0"		302D	
302E	C302-08	C302-03	SH	3' - 0"	6' - 8"	SC-WD	WD	-	-	0"		302E	
302F		C302-03	SH	2' - 4"	6' - 8"	HC-WD	WD	-		0"		302F	
302G	C302-06	C302-04	SH	3' - 0"	6' - 8"	SC-WD	WD	-	-	0"		302G	
302H		C302-04	DS	5' - 0"	6' - 8"	SC-WD	WD	-	-	0"		302H	
302J		C302-05	DS	5' - 0"	6' - 8"	SC-WD	WD	-	-	0"		302J	
302K	C302-06	C302-05	SH	3' - 0"	6' - 8"	SC-WD	WD	-	-	0"		302K	
302L		C302-06	P	6' - 0"	6' - 8"	ALUM	ALUM	Full	-	0"		302L	
302M		C302-08	SH	2' - 0"	6' - 8"	HC-WD	WD	-		0"		302M	
302N		C302-08	OP	5' - 0"	6' - 8"	-	WD	-	-	0"		302N	
302P		C302-08	DS	4' - 0"	6' - 8"	SC-WD	WD	-	-	0"		302P	
303A		C303-07	SH	3' - 0"	6' - 8"	SC-WD	WD	-	20 Minute	0"		303A	
303B		C303-01	DS	5' - 0"	6' - 8"	SC-WD	WD	-	-	0"		303B	
303C	C303-07	C303-01	SH	3' - 0"	6' - 8"	SC-WD	WD	-	-	0"		303C	
303D	C303-07	C303-02	SH	3' - 0"	6' - 8"	SC-WD	WD	-	-	0"		303D	
303E		C303-02	DS	5' - 0"	6' - 8"	SC-WD	WD	-	-	0"		303E	
303F		C303-03	P	6' - 0"	6' - 8"	ALUM	ALUM	Full	-	0"		303F	
303G		C303-04	SH	2' - 0"	6' - 8"	HC-WD	WD	-		0"		303G	
303H	C303-05		SH	2' - 6"	6' - 8"	HC-WD	WD	-		0"		303H	
303J	C303-07	C303-05	SH	3' - 0"	6' - 8"	SC-WD	WD	-	-	0"		303J	
303K	C303-06	C303-07	SH	3' - 0"	6' - 8"	SC-WD	WD	-	-	0"		303K	
303L		C303-07	SH	2' - 6"	6' - 8"	HC-WD	WD	-		0"		303L	

HARDWARE NOTES:

- ALL LOCKSETS SHALL HAVE LIPS OF SUFFICIENT LENGTH TO CLEAR TRIM AND PROTECT CLOTHING.
- GENERAL CONTRACTOR TO COORDINATE HARDWARE PURCHASE, SPECIFICATION, AND INSTALLATION WITH BUILDING MANAGEMENT AND/OR OWNER.
- KEYING OF CYLINDER LOCKS SHALL BE COORDINATED WITH THE OWNER. UNDER OWNER'S DIRECTION, KEY TO NEW OR EXISTING SYSTEM TO BE APPROVED BY OWNER'S REPRESENTATIVE IN WRITING. FURNISH CONSTRUCTION KEY SYSTEM WITH KEYS WHICH CAN BE RENDERED INOPERATIVE BY THE TURN OF THE CHANGE KEY. STAMP ALL KEYS "DO NOT DUPLICATE".
- FURNISH THREE HINGES PER LEAF MIN, U.N.O. FURNISH HINGES WITH STAINLESS STEEL PINS AND CONCEALED BEARINGS.
- FURNISH SILENCERS FOR ALL INTERIOR FRAMES: 3 FOR SINGLE DOORS, 4 FOR PAIR OF DOORS. OMIT WHERE SOUND OR LIGHT SEAL OCCURS.
- INSTALL EACH HARDWARE ITEM PER MANUFACTURER'S INSTRUCTIONS AND RECOMMENDATIONS. DO NOT INSTALL SURFACE-MOUNTED ITEMS UNTIL FINISHES HAVE BEEN COMPLETED ON THE SUBSTRATE. SET UNITS LEVEL, PLUMB, AND TRUE TO LINE AND LOCATION. ADJUST AND REINFORCE THE ATTACHMENT SUBSTRATE AS NECESSARY FOR PROPER INSTALLATION AND OPERATION. ADJUST AND CHECK EACH OPERATING ITEM OF HARDWARE AND EACH DOOR TO ENSURE PROPER OPERATION OR FUNCTION OF EVERY UNIT. REPLACE UNITS WHICH CANNOT BE ADJUSTED TO OPERATE FREELY AND SMOOTHLY.
- ALL ELECTRONIC HARDWARE SHALL BE FAILSAFE AND TIED INTO THE LIFE-SAFETY SYSTEM.
- ALL EXIT DOORS SCHEDULED WITH ELECTRONIC HARDWARE SHALL UNLOCK UPON THE ACTUATION OF A LIFE-SAFETY DEVICE. ALL DOORS REQUIRED AS EXITS WITH ELECTRONIC HARDWARE UNLOCK UPON THE LOSS OF POWER CONTROLLING THE LOCK OR LOCK MECHANISM. ALL DOORS REQUIRED AS EXITS WITH ELECTRONIC HARDWARE SHALL HAVE THE CAPABILITY OF BEING UNLOCKED BY A SIGNAL FROM THE FIRE COMMAND CENTER IN HIGHRISE BUILDINGS WHERE APPLICABLE.
- EMERGENCY LIGHTING AND AUDIBLE ALARM SHALL BE PROVIDED AT ALL DOORS REQUIRED AS EXITS WITH DELAYED EGRESS ELECTRIC HARDWARE. ALARM SHALL NOTIFY TENANT FLOOR AND CUSTOMER'S BURGLAR ALARM SYSTEM.
- ALL DOORS WITH LOCK SETS AND LATCH SETS SHALL HAVE A LEVER HANDLE.
- HAND-ACTIVATED DOOR OPENING HARDWARE MUST BE MOUNTED BETWEEN 34 AND 48 INCHES ABOVE FINISH FLOOR.
- DOOR HARDWARE SHALL BE OPERABLE WITH A SINGLE EFFORT WITHOUT REQUIRING THE ABILITY TO GRASP THE HARDWARE (LEVER OR PUSH TYPE IS ACCEPTABLE PER LOCAL JURISDICTION CODE-DEFINED CRITERIA)
- CARD READER DEVICES TO BE PROVIDED AS REFERENCED IN DOOR SCHEDULE. ALL DEVICES AND INSTALLATION SHALL COMPLY WITH ALL APPLICABLE BUILDING CODES.

DOOR HARDWARE GROUPS				
HARDWARE GROUP	LOCK FUNCTION	LOCATION	LEVER / PULL	
			MODEL	FINISH
1	ENTRY	UNIT OR OFFICE ENTRY, BASEMENT (EXCEPT CRAWLSPACE ACCESS), STORAGE ROOM	SCHLAGE ND53PD-RHO RHODES ENTRANCE DOOR LEVER SET	SATIN NICKEL (619)
2	PRIVACY	BATH / TOILET ROOMS	SCHLAGE ND40S-RHO RHODES PRIVACY DOOR LEVER SET	SATIN NICKEL (619)
3	PASSAGE	ALL INTERIOR HINGED-DOORS OTHER THAN GROUPS 1 & 2	SCHLAGE ND10S-RHO RHODES PASSAGE DOOR LEVER SET	SATIN NICKEL (619)

ON GLAZING ELEVATIONS 'T' INDICATES TEMPERED GLAZING REQUIRED

SAFETY/TEMPERED GLAZING NOTES:

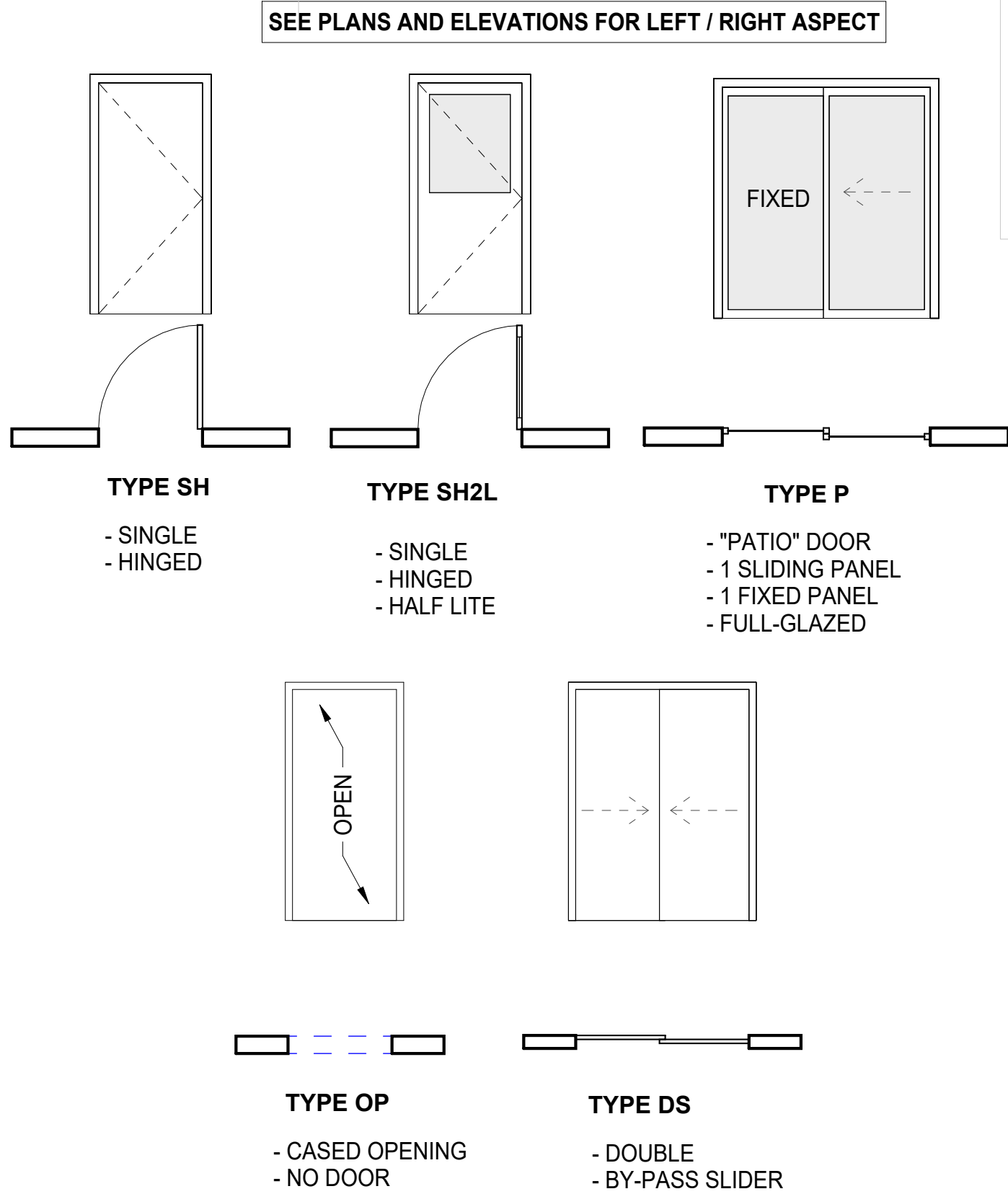
- IT IS ASSUMED THAT THE TERM 'SAFETY GLAZING' IN THESE NOTES REFERS TO TEMPERED GLASS.
- PER IBC 2406.3 PROVIDE PERMANENT IDENTIFICATION, LABELING ALL SAFETY GLAZING.
- PER IBC 2406.4 PROVIDE SAFETY GLAZING IN ALL HAZARDOUS LOCATIONS TO INCLUDE, BUT NOT LIMITED TO THE FOLLOWING LOCATIONS:
 - PER IBC 2406.4.1 GLAZING IN ALL FIXED OR OPERABLE PANELS OF SWINGING, SLIDING AND BIFOLD DOORS. **EXCEPTIONS:**
 - GLAZED OPENINGS OF A SIZE THROUGH WHICH A 3-INCH DIAMETER SPHERE IS UNABLE TO PASS.
 - DECORATIVE GLAZING
 - GLAZING MATERIALS USED AS CURVED GLAZED PANELS IN REVOLVING DOORS.
 - COMMERCIAL REFRIGERATED CABINET GLAZED DOORS.
 - PER IBC 2406.4.2 GLAZING IN AN INDIVIDUAL FIXED OR OPERABLE PANEL ADJACENT TO A DOOR WHERE THE NEAREST VERTICAL EDGE OF THE GLAZING IS WITHIN A 24-INCH ARC OF EITHER VERTICAL EDGE OF THE DOOR IN A CLOSED POSITION AND WHERE THE BOTTOM EDGE OF THE GLAZING IS LESS THAN 60-INCHES ABOVE THE WALKING SURFACE.
 - PER IBC 2406.4.3 GLAZING IN AN INDIVIDUAL FIXED OR OPERABLE PANEL THAT MEETS **ALL** OF THE FOLLOWING CONDITIONS SHALL BE A HAZARDOUS LOCATION:
 - EXPOSED AREA OF AN INDIVIDUAL PANE IS GREATER THAN 9-SQUARE FEET
 - THE BOTTOM EDGE OF GLAZING IS LESS THAN 18-INCHES ABOVE THE FLOOR.
 - THE TOP EDGE OF THE GLAZING IS GREATER THAN 36-INCHES ABOVE THE FLOOR.
 - ONE OR MORE WALKING SURFACE(S) ARE WITHIN 36-INCHES, MEASURED HORIZONTALLY AND IN A STRAIGHT LINE, OF THE PLANE OF THE GLAZING.
 - PER IBC 2406.4.4 GLAZING IN GUARDS AND RAILINGS, INCLUDING STRUCTURAL BALUSTER PANELS AND NON-STRUCTURAL IN-FILL PANELS, SHALL BE CONSIDERED A HAZARDOUS LOCATION.
 - PER IBC 2406.4.5 GLAZING IN WALLS, ENCLOSURES OR FENCES CONTAINING OR FACING HOT TUBS, SPAS, WHIRLPOOLS, SAUNAS, STEAM ROOMS, BATHTUBS, SHOWERS AND INDOOR OR OUTDOOR SWIMMING POOLS WHERE THE BOTTOM EDGE OF THE GLAZING IS LESS THAN 60-INCHES MEASURED VERTICALLY ABOVE ANY STANDING OR WALKING SURFACES SHALL BE CONSIDERED A HAZARDOUS LOCATION. **EXCEPTION:** GLAZING THAT IS MORE THAN 60-INCHES MEASURED HORIZONTALLY AND IN A STRAIGHT LINE, FROM THE WATER'S EDGE OF A BATHTUB, HOT TUB, SPA, WHIRLPOOL OR SWIMMING POOL.
 - PER IBC 2406.4.6 GLAZING WHERE THE BOTTOM OF EXPOSED EDGE OF THE GLAZING IS LESS THAN 60-INCHES ABOVE THE PLANE OF THE ADJACENT WALKING SURFACE OF STAIRWAYS, LANDINGS BETWEEN FLIGHTS OR STAIRS AND RAMPS SHALL BE CONSIDERED A HAZARDOUS LOCATION. **EXCEPTIONS:**
 - THE SIDE OF A STAIRWAY, LANDING OR RAMP THAT HAS A GUARD AND THE PLANE OF THE GLASS IS GREATER THAN 18-INCHES
 - GLAZING 36-INCHES OR MORE MEASURED HORIZONTALLY FROM THE WALKING SURFACE.
 - PER IBC 2406.4.7 GLAZING ADJACENT TO THE LANDING AT THE BOTTOM OF A STAIRWAY WHERE THE GLAZING IS LESS THAN 60-INCHES ABOVE THE LANDING AND WITHIN A 60-INCH HORIZONTAL ARC THAT IS LESS THAN 180-DEGREES FROM THE BOTTOM TREAD NOSING SHALL BE CONSIDERED A HAZARDOUS LOCATION. **EXCEPTION:** GLAZING THAT IS PROTECTED BY A GUARD AND THE PLANE OF THE GLASS IS GREATER THAN 18-INCHES FROM THE GUARD.

GENERAL DOOR NOTES:

- SEE CODE STUDY FOR ADDITIONAL DOOR HARDWARE NOTES AND REQUIREMENTS. IF THERE IS A DISCREPANCY BETWEEN THE CODE STUDY AND THE DOOR SCHEDULE NOTIFY ARCHITECT.
- ALL DOORS SHALL BE ARRANGED TO BE OPENED FROM THE EGRESS SIDE WITHOUT A KEY OR SPECIAL KNOWLEDGE OR EFFORT.
- ALL DOORS SHALL HAVE LEVER-OPERATED MECHANISMS UNLESS ENTRY DOOR WHICH RECEIVES EXTERIOR PULL AND INTERIOR PUSH BAR.
- PROVIDE MIN 3 HINGES PER DOOR.
- ALL DOORS TO BE PLACED 4 INCHES FROM ADJACENT WALL UNLESS NOTED OTHERWISE.
- ALL DOOR HARDWARE SHALL MEET ADA REQUIREMENTS.
- ALL DOOR GLAZING TO BE TEMPERED.
- ALL EXTERIOR DOORS TO BE INSULATED AND HAVE WEATHERSTRIPPING, THERMAL BREAK THRESHOLD AND SWEEP.
- SEE PLAN FOR DOOR OPERATION (SWING/SLIDE) DIRECTION (LEFT / RIGHT)
- EXTERIOR LANDING MAY SLOPE UP TO 1/4" PER FOOT (MAX) IN ANY DIRECTION FOR SURFACE DRAINAGE.
- THE FLOOR OR LANDING SHALL NOT BE MORE THAN 1/2" LOWER THAN THE THRESHOLD OF THE DOORWAY. BEVEL (1:2 MAX. SLOPE) WHERE THE THRESHOLD EXCEEDS 1/4" IN HEIGHT.
- DOORS OPENING INTO REQUIRED EXIT CORRIDORS MAY NOT RESTRICT THE REQUIRED WIDTH WHEN OPENED IN ANY POSITION.
- ALL DOORS REQUIRED AS EXITS SHALL SWING IN THE DIRECTION OF TRAVEL.
- FIRE RATED DOOR SHALL HAVE RATING LABEL VISIBLE
- TRIM THE BOTTOMS OF DOORS TO CLEAR THE TOP OF FINISHED FLOOR, AS APPLICABLE, BY 1/4" INCH MAXIMUM, U.N.O. VERIFY SLAB CONDITIONS AND TRIM EACH DOOR TO FIT CONDITIONS. WHERE RADICAL VARIATIONS IN FLOOR ELEVATION EXIST, DOORS SHALL BE ORDERED WITH BOTTOM STILE SIZED TO ACCOMMODATE THESE UNDERCUT CONDITIONS.

STOREFRONT DOOR NOTES:

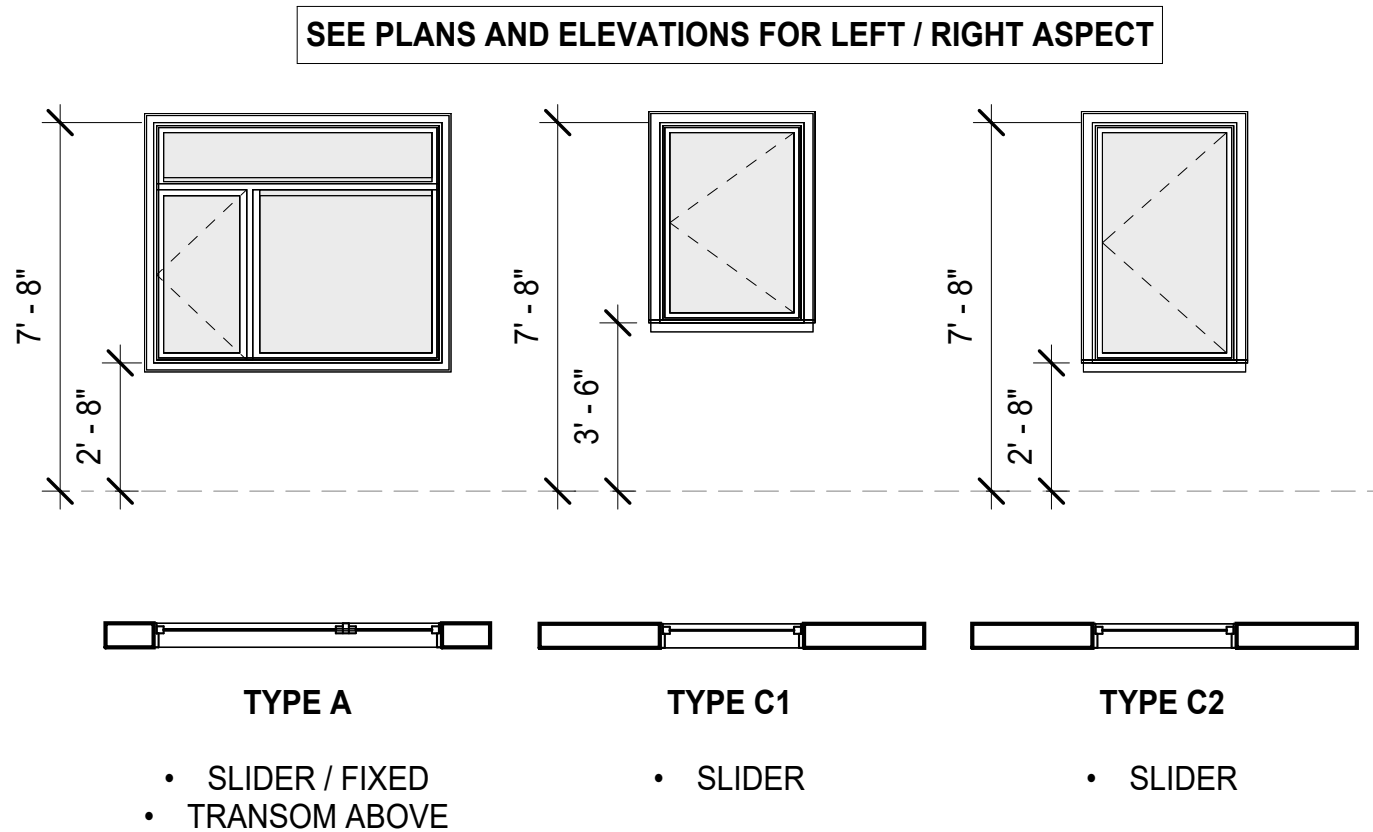
- ALL HINGED ALUMINUM STOREFRONT DOORS SHALL HAVE CONTINUOUS HINGES.
- STOREFRONT SUPPLIER SHOULD PROVIDE ALL DOOR HARDWARE INCLUDING CLOSERS, CYLINDERS, PUSH / PULLS AND ECONOMY EXIT DEVICES.
- STOREFRONT TO MEET MOA MINIMUM REQUIREMENTS. ENGINEERING TO MEET MOA DEFERRED SUBMITTAL TO BE PROVIDED BY STOREFRONT CONTRACTOR IF REQUIRED.



Door Types
1/4" = 1'-0"

Window Schedule						
Type Mark	Window Style	Width	Height	Head Height	Sill Height	Count
A	Casement / Fixed with Transom	6' - 0"	5' - 0"	7' - 8"	2' - 8"	30
C1	Casement	3' - 0"	4' - 2"	7' - 8"	3' - 6"	6
C2	Casement	3' - 0"	5' - 0"	7' - 8"	2' - 8"	3
Grand total: 39						

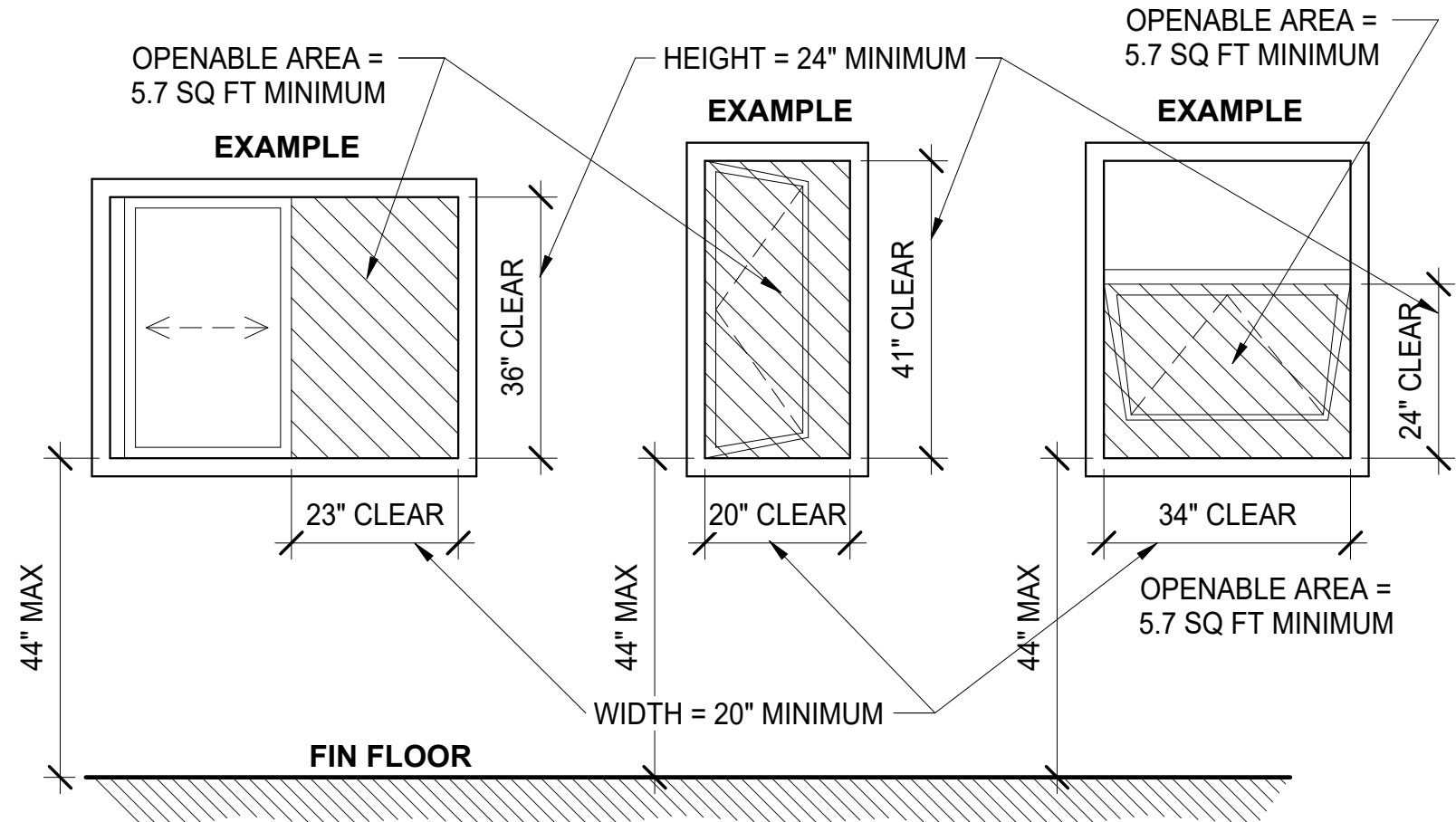
Window Types
1/4" = 1'-0"



EGRESS WINDOWS MUST MEET **ALL** OF THE FOLLOWING REQUIREMENTS:

- OPENABLE AREA FOR WINDOWS AT GRADE FLOOR = 5.0 SQ FT MINIMUM
- OPENABLE AREA FOR WINDOWS ABOVE GRADE FLOOR = 5.7 SQ FT MINIMUM
- OPENING HEIGHT = MINIMUM 24" CLEAR
- OPENING WIDTH = MINIMUM 20" CLEAR
- BOTTOM OF OPENING HEIGHT = 44" MAXIMUM
- OPENINGS SHALL BE OPERATIONAL FROM THE INSIDE OF THE ROOM WITHOUT THE USE OF KEYS, TOOLS OR SPECIAL KNOWLEDGE.

WARNING: USING BOTH THE 20" MINIMUM WIDTH AND THE 24" MINIMUM HEIGHT ONLY GIVES 3.33 SQ FT OF CLEAR OPENING. THIS DOES NOT MEET THE MINIMUM OPENING REQUIREMENTS.



Egress Window Requirements
1/2" = 1'-0"

Glazing Notes
12" = 1'-0"

DRAWINGS AT 11x17 ARE 1/2 SCALE INDICATED

FNA Project #:
2024 60B
Project Start Date:
11-06-2024

Release Date: **03-27-2025**
Released for:
Issued for Bid/ Permit/ Construction

04-15-2025 Address Bidder Questions

QUESTIONS

QUESTIONS

QUESTIONS

QUESTIONS

QUESTIONS

QUESTIONS

QUESTIONS

QUESTIONS

QUESTIONS

QUESTIONS

QUESTIONS

QUESTIONS

QUESTIONS

QUESTIONS

QUESTIONS

QUESTIONS

QUESTIONS

QUESTIONS

QUESTIONS

QUESTIONS

QUESTIONS

QUESTIONS

QUESTIONS

QUESTIONS

QUESTIONS

QUESTIONS

QUESTIONS

QUESTIONS

QUESTIONS

QUESTIONS

QUESTIONS

QUESTIONS

QUESTIONS

QUESTIONS

QUESTIONS

QUESTIONS

QUESTIONS

QUESTIONS

QUESTIONS

QUESTIONS

QUESTIONS

QUESTIONS

QUESTIONS

QUESTIONS

QUESTIONS

QUESTIONS

QUESTIONS

QUESTIONS

QUESTIONS

QUESTIONS

QUESTIONS

QUESTIONS

QUESTIONS

QUESTIONS

QUESTIONS

APPLIANCES / TOILET ROOM / SPECIALTY EQUIPMENT					
MARK	DESCRIPTION	MANUFACTURER	MODEL	FINISH	COMMENTS
BUILDING EQUIPMENT					
MB3	MAILBOXES	FLORENCE CORP	VITAL CBU 1570-8T6-PG	POSTAL GREY	PEDESTAL MOUNT ADA HEIGHT MAILBOXES, 8 TENANT DOORS, 4 PARCEL BOXES, 1 OUTGOING, PROVIDE (3) KEYS, (1) CLEAR PLASTIC CARD HOLDER PER BOX, FRONT LOAD UNITS, USPS ACCESS, ADA COMPLIANT
UNIT APPLIANCES (ALL UNITS)					
D1	DRYER	GE APPLIANCES	GFD55ESSNWW	WHITE	FRONT LOAD ELECTRIC DRYER WITH CONTROLS ON FRONT, 7.8 CU FT CAPACITY, ADA COMPLIANT
DW1	DISHWASHER	GE APPLIANCES	GDTT225SGLWW	WHITE	24" WIDE DISHWASHER WITH FRONT CONTROLS AND POWER CORD, ENERGY STAR QUALIFIED, QUIET PACKAGE, ADA COMPLIANT
REF1	REFRIGERATOR	GE APPLIANCES	GSE23GGPWW	WHITE	23 CU FT, SIDE BY SIDE REFRIGERATOR WITH ICE MAKER, ENERGY STAR QUALIFIED, UFAS COMPLIANT
RH1	RANGE HOOD	PER MECHANICAL	PER MECHANICAL	WHITE	30" UNDER CABINET HOOD, REFER TO INTERIOR ELEVATIONS FOR UFAS COMPLIANT SWITCH AT UFAS UNITS
W1	WASHER	GE APPLIANCES	GFW510SCNWW	WHITE	FRONT LOAD ENERGY STAR QUALIFIED, 4.5 CU FT CAPACITY, ADA COMPLIANT
UNIT APPLIANCES (NON-UFAS)					
RG1	RANGE	GE APPLIANCES	JB258DMWW	WHITE	30" FREE-STANDING, SELF-CLEANING ELECTRIC RANGE, ELECTRIC COILS
UNIT APPLIANCES (UFAS)					
RG2	DROP-IN RANGE (UFAS)	GE APPLIANCES	JDO630DFWW	WHITE	ENERGY STAR QUALIFIED 30" DROP-IN ELECTRIC RANGE, CERAMIC GLASS COOKTOP, ELECTRIC OVEN WITH GLASS DOOR FRONT, ADA COMPLIANT
UNIT BATH TOILET ACCESSORIES					
BTS	BATHTUB SEAT (UFAS)	PRECISION-FIT BATH	FOLDING TUB SEAT	WHITE	
GB	GRAB BARS (UFAS)	BOBRICK	B-6806 SERIES	SATIN-FINISH STAINLESS STEEL	
MR1	MIRROR	-	44X36 POLISHED EDGES	SATIN NICKEL	MOUNT TO WALL WITH MASTIC AND ALUMINUM J-MOLD AT TOP AND BOTTOM
MR2	MIRROR	-	36X36 POLISHED EDGES	SATIN NICKEL	MOUNT TO WALL WITH MASTIC AND ALUMINUM J-MOLD AT TOP AND BOTTOM
SCR	SHOWER CURTAIN ROD	BOBRICK	B-207	SATIN-FINISH STAINLESS STEEL	HEAVY DUTY, COORDINATE EXACT LOCATION WITH OWNER PRIOR TO INSTALLATION
SGB	SHOWER GRAB BARS	BOBRICK	B-6806 SERIES	SATIN-FINISH STAINLESS STEEL	
TH	TOWEL HOOK	MOEN / METHOD	YB2403CH	SATIN NICKEL	
TPD1	TOILET PAPER DISPENSER	MOEN / METHOD	YB2408CH	SATIN NICKEL	
TR	TOWEL RING	MOEN / METHOD	YB2486CH	SATIN NICKEL	
UNIT ELECTRICAL					
DP	DATA PANEL	REFER TO ELECTRICAL			
EP	ELECTRICAL PANEL	REFER TO ELECTRICAL			
UNIT MISCELLANEOUS					
CH	COAT HOOKS	BRADLEY CORP	9134 HAT & COAT HOOK	SATIN-FINISH STAINLESS STEEL	

APPLIANCE GENERAL NOTES

1. SIDE BY SIDE WASHER / DRYER INSTALLATION. WASHER ON LEFT, DRYER ON RIGHT IN ALL UNITS. WASHER DOOR TO HINGE ON LEFT SIDE, DRYER DOOR TO HINGE ON RIGHT SIDE.
2. CONTRACTOR TO TEST RUN ALL APPLIANCES AFTER INSTALLATION.

FINISHES / MATERIALS / COLORS			
AREA / OBJECT	MANUFACTURER	MODEL / MATERIAL	COLOR / FINISH
FLOORING	TAS LVP	EXPEDITION	COLOR: T.B.D.
CABINETRY	SMART CABINETRY	DOOR: FREEPORT	COLOR: T.B.D.
PAINT	SHERWIN WILLIAMS		COLOR: WHISPER WHITE
			WALLS: EGGSHELL
			TRIM: ENAMEL
			CEILINGS: FLAT
SOLID SURFACE	HI-MACS	2024 ALL-STAR PROGRAM GROUP B	COLOR : T.B.D.
TRIM		MDF	DOORS 1" X 2"
			BASE 1" X 3"

MATERIAL GENERAL NOTES

1. WALL / CEILING PAINT AND TEXTURE:

A. TEXTURE: LIGHT ORANGE PEEL

B. FIRST COAT: SHERWIN WILLIAMS PVA DRYWALL PRIMER AND SEALER

C. SECOND COAT: PRODUCT AS SPECIFIED IN COLOR AND MATERIAL SCHEDULE

D. THIRD COAT: PRODUCT AS SPECIFIED IN COLOR AND MATERIAL SCHEDULE
2. MILLWORK PAINT AND TEXTURE:

A. FIRST COAT: SHERWIN WILLIAMS MULTI-PURPOSE OIL-BASED PRIMER

B. SECOND COAT: PRODUCT AS SPECIFIED IN COLOR AND MATERIAL SCHEDULE

C. THIRD COAT: PRODUCT AS SPECIFIED IN COLOR AND MATERIAL SCHEDULE

FINISH NOTES

1. FLOORING: LVP (THROUGHOUT)
2. BASE:

A. DRY AREAS: WOOD

B. WET AREAS: RUBBER
3. PAINT:

A. ALL WALLS

B. ALL HARD LIDS

FNA Project #:
2024 60B

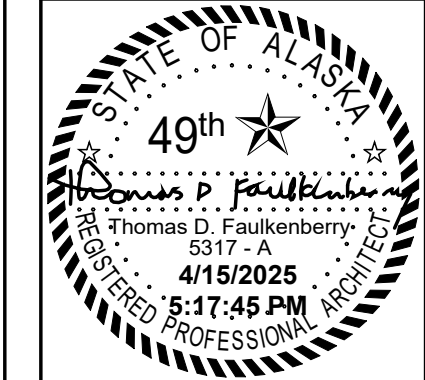
Project Start Date:
11-06-2024

Release Date: 03-27-2025

Released for:

Issued for Bid/ Permit/
Construction

04-15-2025 Address Bidder
Questions



FAULKENBERRY & ASSOCIATES, INC. ARCHITECTS

Alaska Authorization #72800D

P.O. Box 230083 - Anchorage, Alaska 99523-0083 - (907)522-9193

Permit #: C25-1334

Plotted on: 4/15/2025 5:17:45 PM

CIHA - Baxter Residential Development

Phase 1 - Multi-Family - 9 Plex

BUILDING C

Tract B

Valelskaya Addition # 1 Subdivision

4220 Baxter Road

Anchorage, AK 99504

SITE KEY PLAN

BUILDING C

sheet name

Appliance and Finish Schedules

sheet number

A7.3