



TO: ALL PLANHOLDERS OF RECORD
RE: ITB 26T-DV-109 Kenaitze Pointe Mechanical Systems Upgrade
FROM: Rashaad Esters, Procurement Manager
PAGE(S): 5, including this cover sheet
DATE: May 4, 2026

Transmitted herewith is an Addendum to the solicitation listed above. If the Addendum is **not** received in full, please contact the Procurement Office at (907) 793-3000. If all pages of the Addendum are received, please sign this sheet and email it back to CIHA's Procurement Department at Procurement@cookinlethousing.org.

Company's Name

Company's Representative

Date

ITB 26T-DV-109 Kenaitze Pointe Mechanical Systems Upgrade

This document forms a part of and modifies the solicitation as noted below. Respondents must acknowledge receipt of this addendum. Failure to acknowledge receipt of this addendum may subject Respondent to disqualification.

PROJECT: Mechanical Systems Upgrade

FOR: Cook Inlet Housing Authority

The following corrections, clarifications, additions, and/or deletions to the ITB 26T-DV-109 are hereby made a part of said documents. All other terms and conditions remain the same.

This Addendum Shall:

1. Add clarifying attachment with drawing
2. Answer questions submitted by the question submittal deadline date of 04/30/2026

	QUESTION	ANSWER
1	Range Hoods (Sheet M2.01 & M0.02) Key note #8 on sheet M2.01 specifies replacing the range hood with RH-1 and providing UFAS-compliant controls. However, this section is crossed out in red on sheet M0.02. Could you please confirm if the range hoods are to be replaced? If replacement is required, please specify which controls need to be relocated for UFAS compliance and the customer's preference for the installation of these relocated controls.	Range hoods are NOT part of this project and are to be excluded
2	Unit Heater (Sheet M2.02) Key note #1 indicates the existing unit heater should be replaced with UH-1. Does the UH-1 require a hard-wired connection, or does it utilize a cord and receptacle?	UH-1 requires a hard-wired connection
3	Boiler Breakers (Sheet E4.02) The documentation shows the boilers at 8.3A and associated pumps at approximately 5.4A, totaling 13.7A per boiler. The existing breakers are 25A. Would the customer prefer to maintain the 25A breakers, or should they be reduced to 20A?	Breakers can be reduced to 20A
4	The controls specification on sheet M0.03 indicates that the new controls shall be controlled by the existing control system. Please provide the manufacture/vendor for the existing DDC system in the building.	LONG Building Technologies

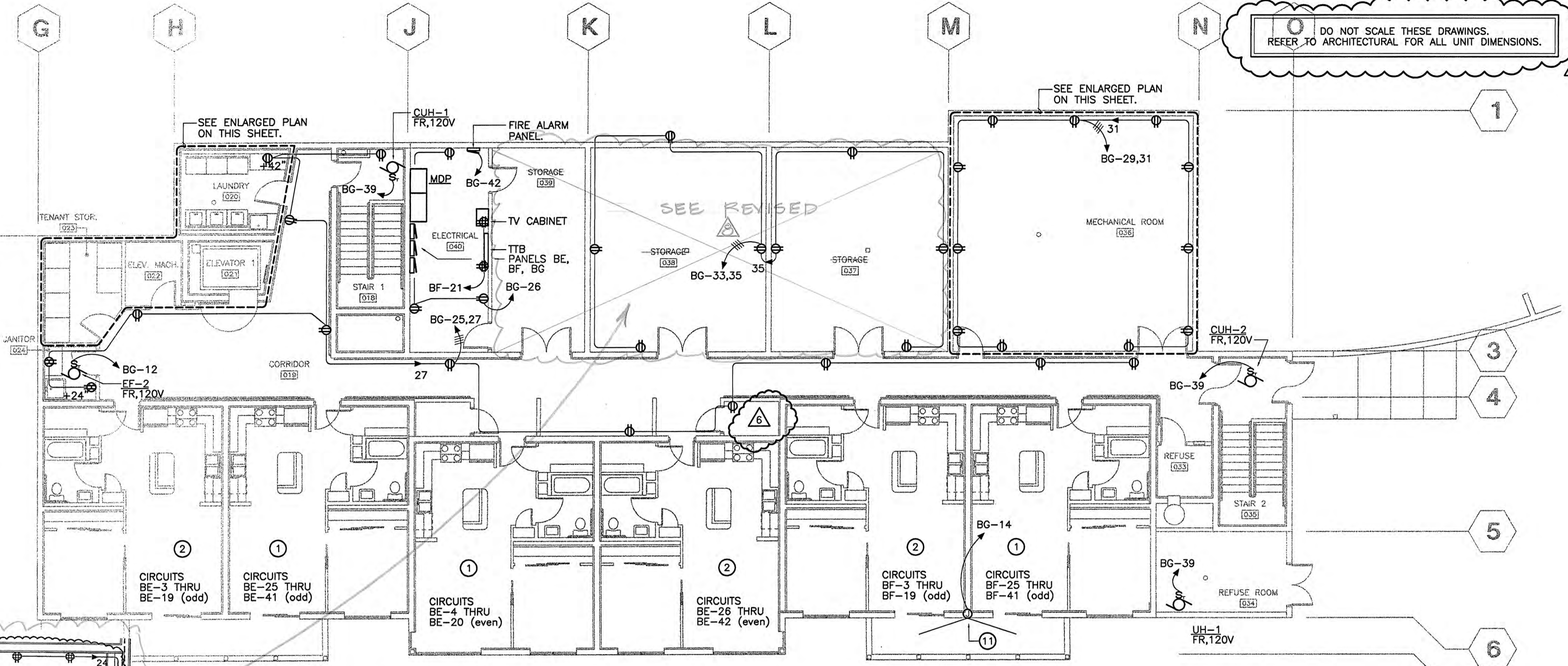
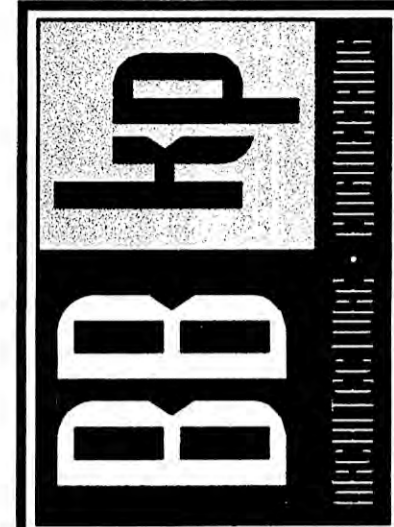
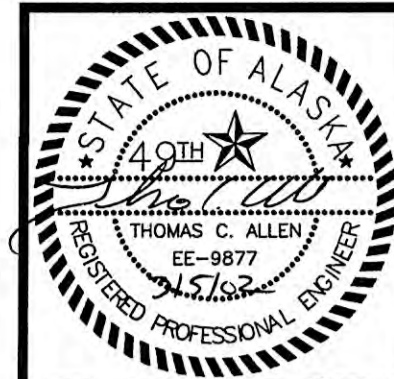
Clarifications to be included in Addendum #2 for the Kenaitze Pointe – Mechanical Systems Upgrade Project

1. Alternate #3 shall include removal of both the existing in-use hot water generators and the abandoned hot water generators.
2. Sheet E3.3 from the 2002 Record Drawings is included to show existing circuitry in the mechanical room.

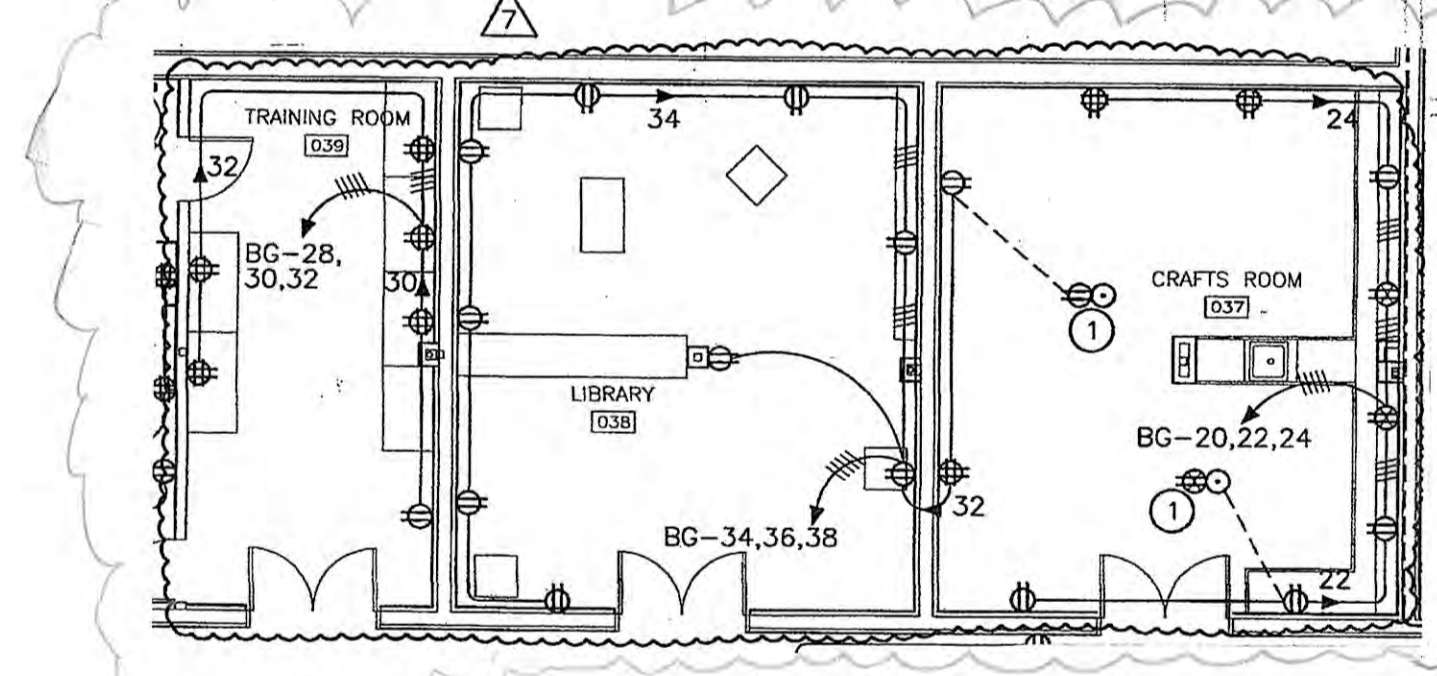
SHEET NOTES

- 1 TYPICAL ONE BEDROOM UNIT. SEE 2/E3.7 FOR ENLARGED POWER PLAN THIS AREA.
- 2 TYPICAL ONE BEDROOM UNIT MIRRORED. SEE 2/E3.7 FOR ENLARGED POWER PLAN THIS AREA.
- 3 SINGLE RECEPTACLE OUTLET FOR CONNECTION TO SP-1. FIELD VERIFY FOR LOCATION AND MOUNTING HEIGHT PRIOR TO ROUGH-IN.
- 4 CONNECT TO LIGHT FIXTURE LOCATED IN THE ELEVATOR PIT. SEE 1/E2.3.
- 5 FUSED DISCONNECT SWITCH FOR CONNECTION TO ELEVATOR CONTROL CABINET.
- 6 FUSED DISCONNECT SWITCH FOR CONNECTION TO ELEVATOR MOTOR. SEE 1/E5.0 FOR FUSED DISCONNECT SWITCH, CONDUIT AND WIRE SIZE.
- 7 UNIT MOUNTED ELEVATOR CONTROL CABINET.
- 8 CONNECT TO LIGHTING CIRCUIT IN THIS ROOM. SEE 1/E2.1.
9. COORDINATE WITH MECHANICAL DRAWINGS FOR MECHANICAL EQUIPMENT LOCATIONS PRIOR TO ROUGH-IN.
10. FIELD COORDINATE WITH MECHANICAL EQUIPMENT, PIPING, DUCT WORK ETC. PRIOR TO LOCATING ELECTRICAL DEVICES (i.e. DISCONNECT SWITCH COMBINATION MAGNETIC MOTOR STARTER/DISCONNECT, ETC.) TO MAINTAIN 3'-0" WORKING CLEARANCE IN FRONT OF THE ELECTRICAL DEVICES. PROVIDE UNISTRUT AS REQUIRED FOR MOUNTING ELECTRICAL DEVICES TO MECHANICAL EQUIPMENT'S ENCLOSURE.
- 11 JUNCTION BOX FOR CONNECTION OF HEATRACE. PROVIDE J-BOX AND CONDUIT ROUTED DOWN WALL THRU SLAB INTO SIDE OF BALCONY DAYLIGHT DRAIN. HEATRACE ENTIRE LINE WITH HEAT TRACE TERMINATED AT PIPE DAYLIGHT LOCATION (APPROX 35'). RAYCHEM GM-1X OR EQUAL AND ALL REQUIRED APPURTENANCES FOR A COMPLETE INSTALLATION.

DO NOT SCALE THESE DRAWINGS. REFER TO ARCHITECTURAL FOR ALL UNIT DIMENSIONS.

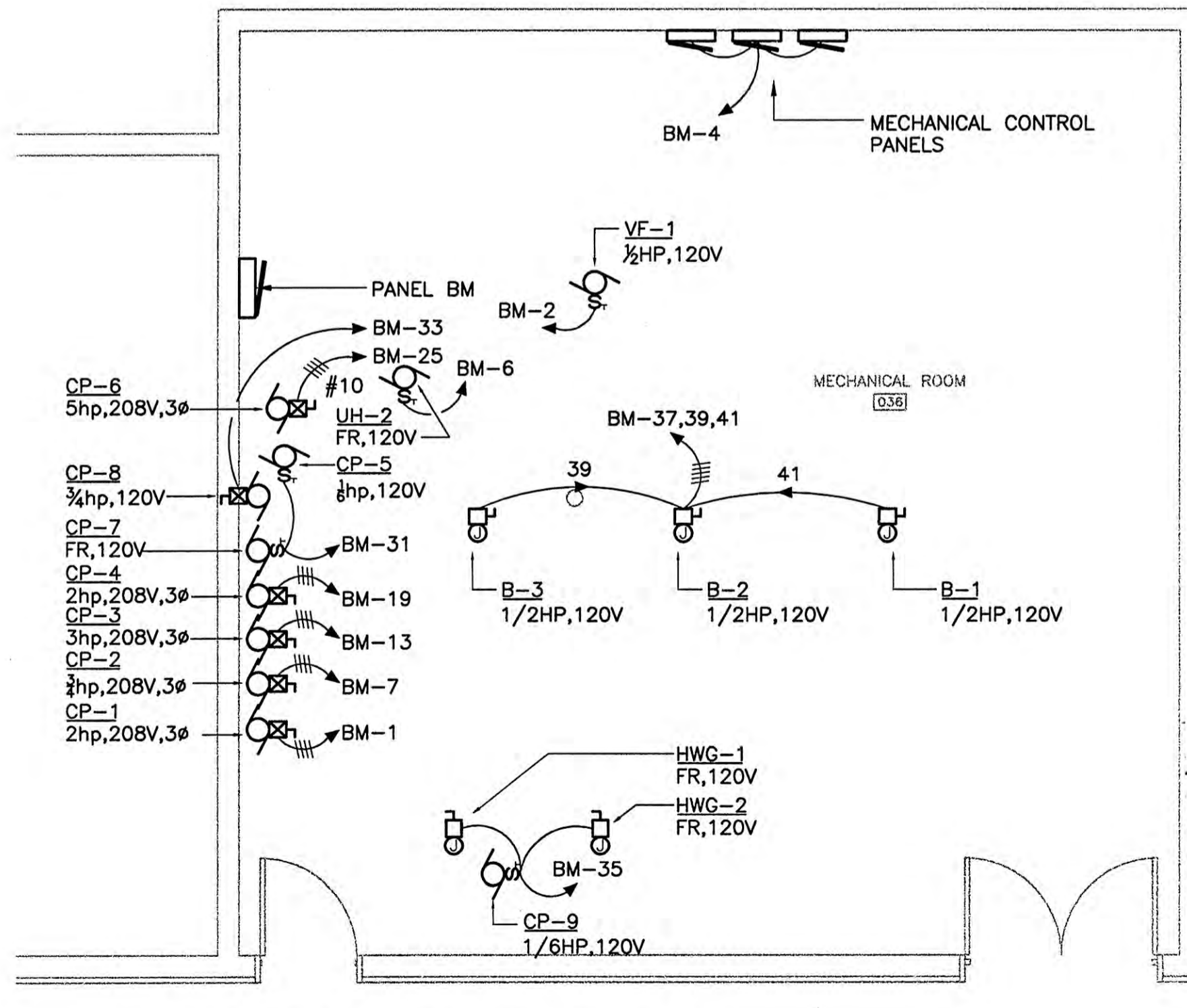


1 LOWER LEVEL POWER PLAN - EAST WING
E3.3 SCALE: 1/8" = 1'-0"



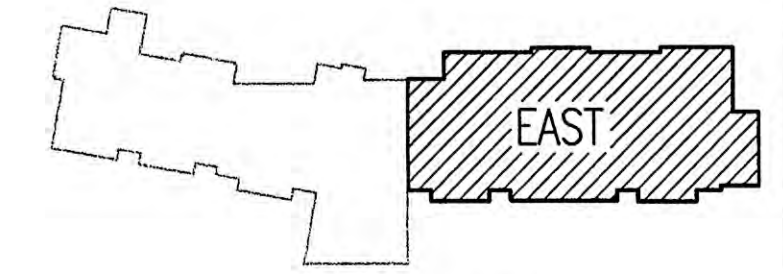
2 ENLARGED POWER PLAN
E3.3 SCALE: 1/4" = 1'-0"

REVISED POWER PLAN
(TRAINING RM. 039, LIBRARY 038 & CRAFTS RM. 037)
1 PROVIDE FLUSH MOUNTED IN GRADE RECEPTACLES. PROVIDE WALKER 800 SERIES OR EQUAL WITH ALL REQUIRED CONNECTIONS AND PIECES FOR A COMPLETE INSTALLATION.



3 ENLARGED POWER PLAN
E3.3 SCALE: 1/4" = 1'-0"

RECORD DRAWING



KEY PLAN

COOK INLET HOUSING AUTHORITY
53 ELDERLY HOUSING UNITS
ANCHORAGE, ALASKA

REVISIONS
ADDENDUM #4
OCT. 15, 2001

CONFORMED DRWG
FEB. 27, 2002
ADDENDUM #7
NOV. 05, 2002

DC/VA-031
11-20-02

JOB NO. 2001.007.0
DATE 07/06/01
DRAWN AMH
REVIEWED XPT/TCA

LOWER LEVEL POWER PLAN EAST WING

SHEET NO.
E3.3

END OF ADDENDUM